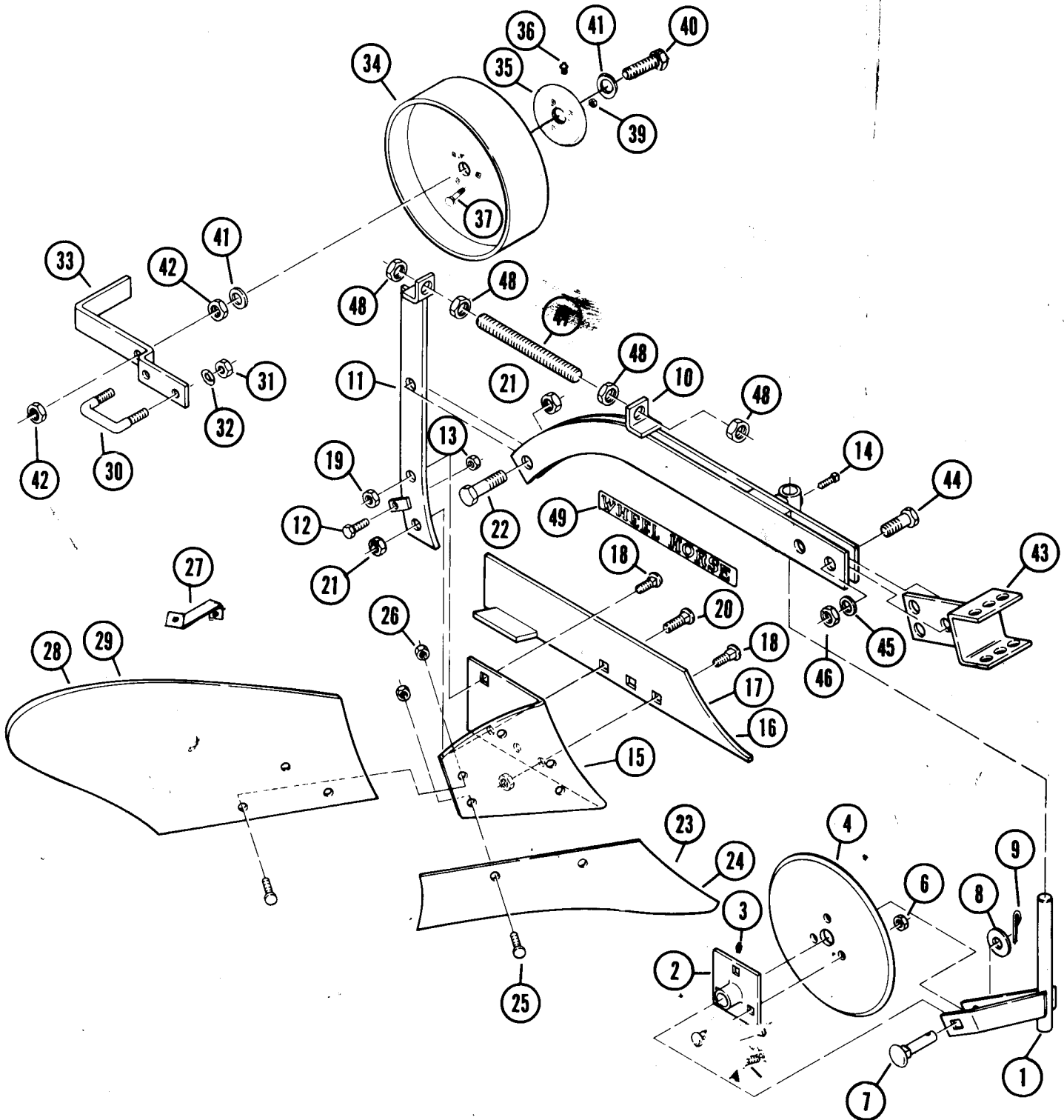


PLOW

ADJUSTING THE COULTER

The coulters must be adjusted to cut two or three inches in depth. When you make this adjustment make sure that the coulters is set so that it will not hit the plow beam or bottom.

EXPLODED VIEW 77-08PL01 AND 77-12PL01 MOLD BOARD PLOWS



PARTS LIST — MOLD BOARD PLOWS
FACTORY ORDER NUMBERS 77-08PL01 (8") & 77-12PL01 (12")

Parts available only through Authorized Dealers.

When ordering parts always list Part No. and Description.

(Specifications subject to change without notice.)

PART NO.	DESCRIPTION	NUMBER REQ'D.	
		77-08PL01	77-12PL01
226092	Fork Assembly	1	1
226093	Hub Assembly	1	1
226004	Grease Fitting	1	1
226094	Coulter Blade	1	1
900037	Carriage Bolt $\frac{5}{16}$ -18 x $\frac{3}{4}$	3	3
915112	Nylok Nut $\frac{5}{16}$ -18	3	3
226095	Blank Carriage Bolt	1	1
920043	Washer, $\frac{5}{8}$ U.S.	1	1
932009	Cotter Pin $\frac{3}{32}$ x 1	1	1
226096	Beam Assembly	1	1
226097	Standard Assembly	1	1
908060	Hex Bolt $\frac{1}{2}$ -13 x $1\frac{1}{4}$	1	1
915115	Nut, $\frac{1}{2}$ -13	1	1
909554	Sq. Hd. Screw $\frac{3}{8}$ -16 x 1	1	1
226098	Frog	1	1
226099	8" Landslide	1	0
226100	12" Landslide	0	1
901634	Plow Bolt, $\frac{3}{8}$ -16 x 1	5	7
915184	Sq. Nut — $\frac{3}{8}$ -16	5	7
901656	Plow Bolt $\frac{1}{2}$ -13 x 2	1	1
905115	Nut, $\frac{1}{2}$ -13	1	1
900114	Carriage Bolt — $\frac{1}{2}$ -13 x $1\frac{1}{2}$	1	1
226101	8" Share	1	0
226102	12" Share	0	1
901643	Plow Bolt $\frac{7}{16}$ -14 x 1	2	2
915114	Nut — $\frac{7}{16}$ -14	2	2
226103	Brace	0	1
226104	8" Mold Board	1	0
226105	12" Mold Board	0	1
226106	Special "U" Bolt	0	1
915117	Nut $\frac{5}{8}$ -11	0	2
920087	Lockwasher — $\frac{5}{8}$	0	2
226107	Gage Wheel Brace	0	1
226108	Gage Wheel Assembly	0	1
226093	Hub Assembly	0	1
226004	Grease Fitting	0	1
900037	Carriage Bolt — $\frac{5}{16}$ -18 x $\frac{3}{4}$	0	3
920008	Washer $\frac{5}{16}$ SAE	0	3
915112	Nylok Nut $\frac{5}{16}$ -18	0	3
908095	Hex Bolt $\frac{5}{8}$ -11 x $4\frac{1}{2}$	0	1
920013	Washer $\frac{5}{8}$ SAE	0	2
915117	Nylok Nut	0	2
226109	Yoke Assembly	1	1
908088	Hex Bolt $\frac{5}{8}$ -11 x 2	2	2
920087	Lockwasher $\frac{5}{8}$	2	2
915117	Nut, $\frac{5}{8}$ -11	2	2
226110	Rod	1	1
915240	Jam Nut $\frac{5}{8}$ -11	4	4
103174	Decal — Wheel Horse	1	1

At the time
Wheel Horse
and start

printing, product information and specifications, as shown, were correct. Wheel Horse Products, Inc. reserves the right to change product specifications, designs and shipment without notice and without incurring obligation.



WHEEL HORSE
lawn & garden tractors

Printed in U.S.A. 0976

515 West Ireland Road, South Bend, Indiana 46614

Part No. 803749R1